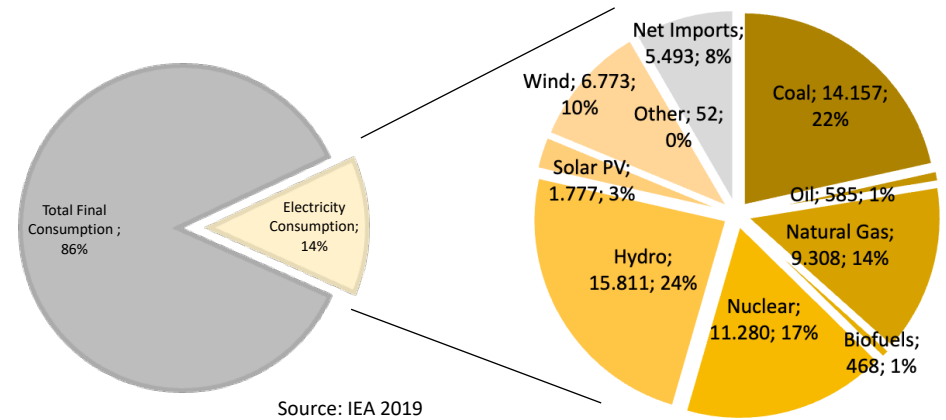
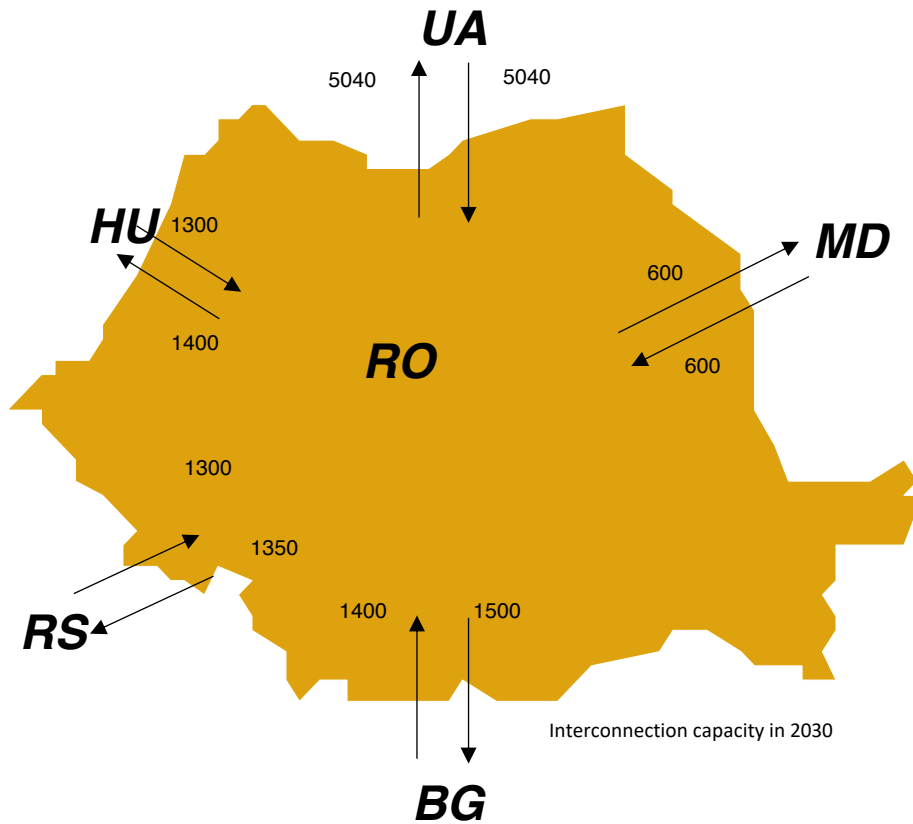


KRAFT FELD

“Solar becomes the new King of Electricity” *IEA, 2020*

Romanian Solar Summit 2021



Replacing Cernavoda Unit 4
0.02% of Romania (5,000ha)

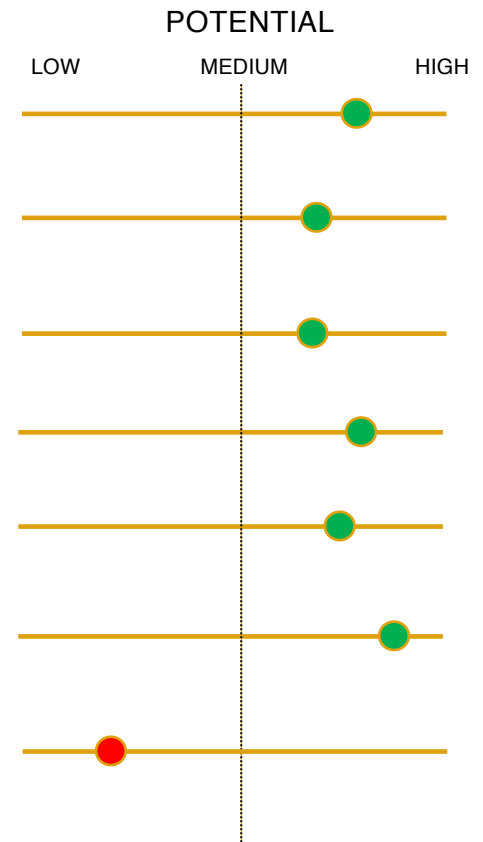
Replacing Fossil Capacities
0.08% of Romania

Switching to Electric Cars
0.09% of Romania

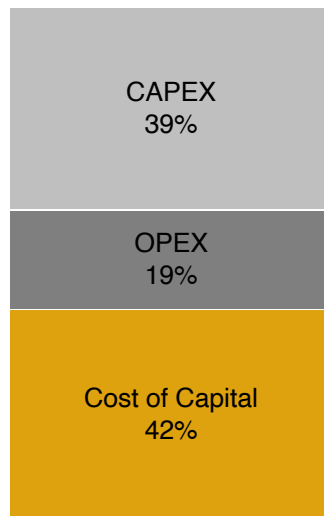
Switching Cars to Biodiesel
24,2% of Romania

Solar Power House: Romania's Solar Potential "one of the highest in Europe"

SOLAR YIELD	1300 kWh/kWp (S Romania), 30% higher than Germany, similar to N Italy
COAL LEGACY	Significant share of coal (23.5% in 2019, EIA) with avg. age 42 years in electricity mix – 1.26 GW (e.g. Mintia, Govora II) due to be de-commissioned by 2025 – already imports of 2.5% in 2019
SOLAR BASE	Low Solar Base – Installed capacity 1397 MWp in 2020 (1760 GWh or 3.14% of total production)
SPOT PRICE	Attractive DAM prices on avg. EUR 5 - 10/MWh higher than W Europe
DEMAND GROWTH	Low per capita electricity consumption (3.1 MWh in Romania vs. 7.3 MWh in Germany, 2019, Our World in Data)
SOLAR POTENTIAL	NCEP Target of 5100 MWp by 2030 still well below EU per capita targets (279 W/capita vs. 758 W/capita), Solar Power Europe calls Romania's potential "one of the highest in Europe"
REGULATORY FRAMEWORK	PPA market in its infancy, no RES auction for market premium/contract for difference

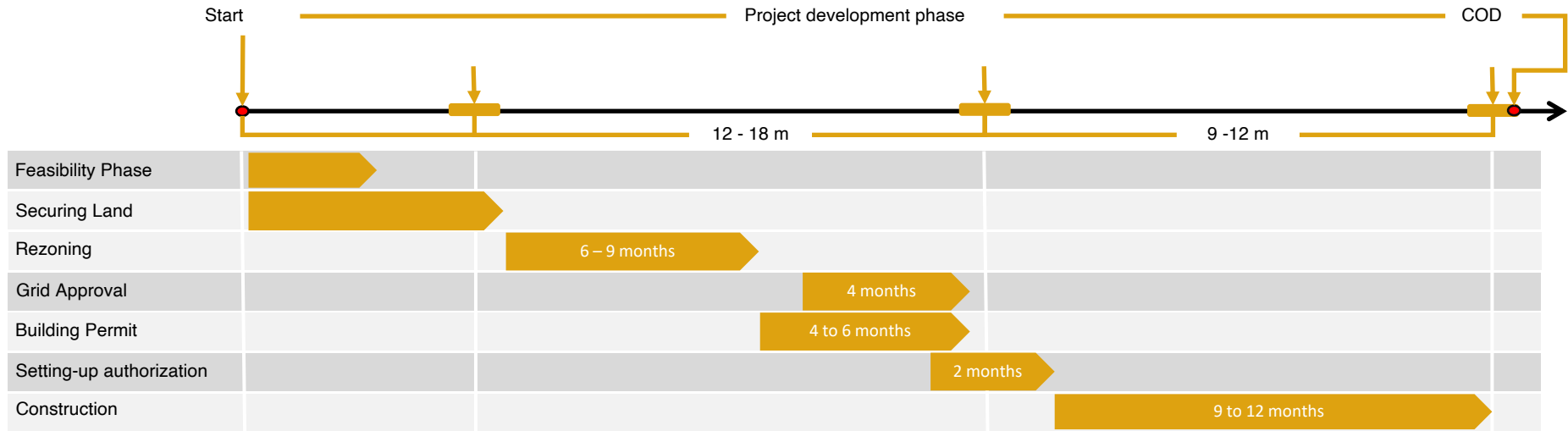


Levelized Cost of Electricity



- **Cost of capital main ingredient for feasible PV project**
- **Low capital costs a prerequisite for an expansion of solar capacity in Romania**
- **Cost of capital in Romania one of the highest in EU**
- **Prerequisites to lower capital cost:**
 - Supporting emergence of private PPA market
 - Initiating government backed PPA through auctions (contract for difference, market premium)
 - Regulatory Stability

ROMANIA



Challenges:

Land Title

High Due Diligence Effort
Restrictions for Agricultural Land

Rezoning

Release from the Agricultural Circuit

Grid Approval

Regulatory Changes announced